

### DL350 PP-like resin

Photosensitive Resin  
for **DigitalWax® X Series** Stereolithography Systems

#### Features

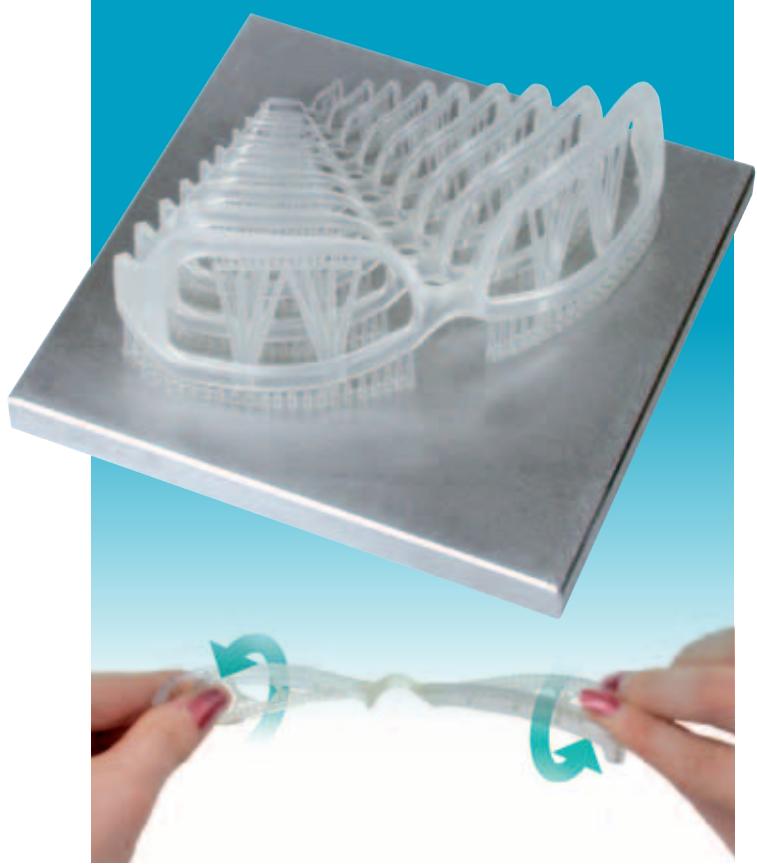
- Polypropylene-like
- High resolution
- High accuracy
- No further manual finishing needed

#### Hints for design

DL 350 Resin is a material developed for general purpose applications and **industrial design**, suitable to produce functional parts.

The models made of DL350 **are strong and flexible**. DL350 is the ideal material to produce those parts which need the flexibility and the toughness typical of Polypropylene.

DL350 is a **Polypropylene-like material** which simulates the characteristics of toughness and flexibility of Polypropylene, suitable for RP and RM of functional parts.



#### Technical characteristics of the liquid material

Environmental values for use	22°C – 25°C – max. RH 40%-60%
Appearance/colour	slightly yellow clear liquid, PP like
Viscosity	600-800 mPa·s at 25°C

#### Technical characteristics of the resin parts after UV post-curing

Hardness (Shore D)	80
Flexural Strength (MPa)	56
Flexural Modulus (MPa)	1.609
HDT @ 0.46 MPa (°C)	58.1
Application / Use	general purpose, industrial design

DL350 Resin is used in the whole DigitalWax®X Series