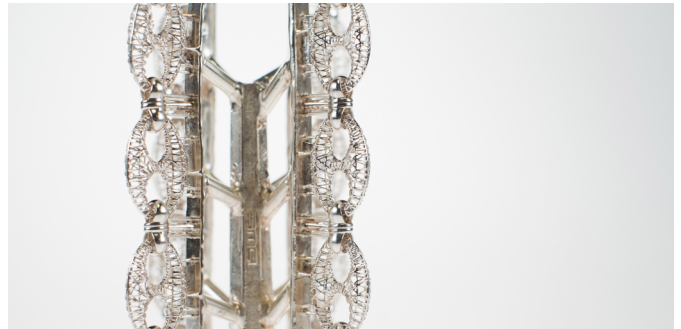


FUSIA DC300

Technical Data Sheet

TDS EN_FUSIADC300_102019



MATERIAL FOR DETAILED MODELS

FUSIA DC300 was developed for direct investment casting of jewellery models. FUSIA DC300 allows the building of detailed parts with high quality resolution, dimensional accuracy and smooth surfaces that do not require any further manual finishing.

ADVICE FOR DESIGN

FUSIA DC300 is a photosensitive material for DWS stereolithography 3D printers, suitable for direct casting of smooth and detailed jewellery models. Models made of FUSIA DC300 are perfectly stable and have accurate shapes and dimensions.

THE FUSIA SERIES

The Fusia series includes all the materials suitable for direct casting for jewellery and they are in-house developed. FUSIA DC300, along with the materials of the Fusia Series, was developed exclusively for DWS jewellery range 3D printers.

FEATURES

- Smooth Surfaces
- Detailed Models
- Easy to Burn Out
- High Accuracy
- No further manual finishing needed
- White Colour

TECHNICAL CHARACTERISTICS OF THE LIQUID MATERIAL

Environmental Values for Use	22°C - 27°C - max, RH 40% - 60%
Appearance / Colour	Liquid / Light yellow
Viscosity	250 ~ 350 mPa·s at 25°C
Density	1,08 g/cm ³

TECHNICAL CHARACTERISTICS OF THE RESIN AFTER UV CURING

Surface Hardness (Shore D)	57 ~ 59
Application / Use	Direct casting

Technical specification subject to change without notice.

DWS srl

Via della Meccanica 21 - 36016 Thiene (VI) - Italy
T: +39 0445 810810 - E: info@dwssystem.com - I: www.dwssystem.com

