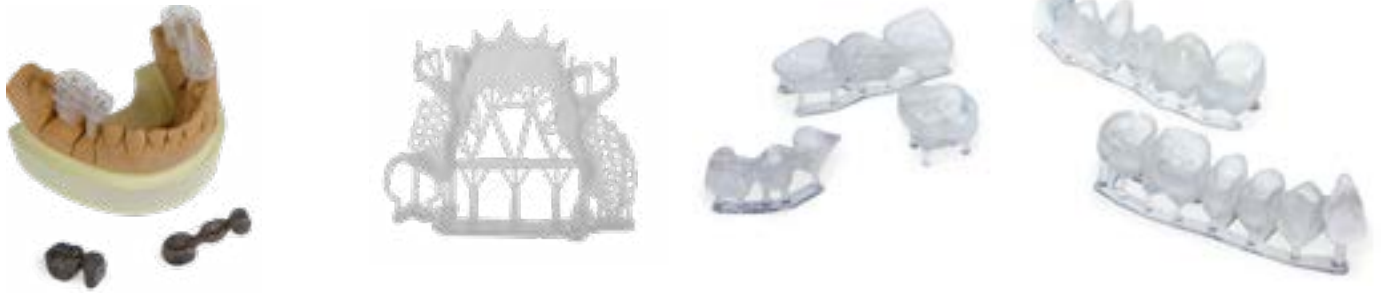


FUSIA RF080

Technical Data Sheet

TDS_EN_FUSIARF080_052018



THE MATERIAL FOR DIRECT CASTING

FUSIARF080 is suitable for direct casting of partials frameworks, bridges and crowns. Models made of FUSIA RF080 are perfectly stable and have accurate shapes and dimensions.

FEATURES

- Transparent
- Extra Rigid
- Excellent Castability
- High Accuracy
- High Resolution for detailed parts
- Smooth Surfaces not requiring any further manual finishing

THE FUSIA SERIES

The Fusia series includes all those materials suitable for direct casting. These materials are developed and produced in-house by DWS.

TECHNICAL CHARACTERISTICS OF THE LIQUID MATERIAL

Environmental Values for Use	22°C - 27°C - max, RH 40% - 60%
Appearance / Colour	Liquid / Light yellow transparent
Density	1,02 g/cm ³
Viscosity	450 ~ 650 mPa·s at 25°C

TECHNICAL CHARACTERISTICS OF THE RESIN AFTER UV CURING

Surface Hardness (Shore D)	77 ~ 79
Application / Use	Direct Casting

Technical specification subject to change without notice.

DWS srl

Via della Meccanica 21 - 36016 Thiene (VI) - Italy
T: +39 0445 810810 - E: info@dwssystem.com

